



3-port CWDM

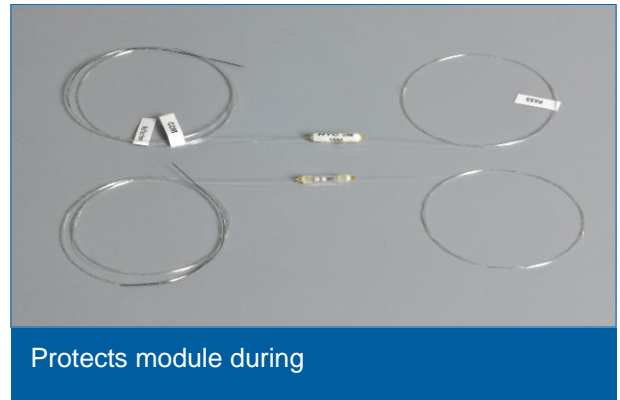
3-port CWDM devices are used in passive optical WDM module

Description

3-port CWDM devices are used in passive optical WDM module; They can Multiplex or Demultiplex different optical signals in Wavelength Division Multiplexing system, and increase the signal transmission speed and communication capacity.

Feature

- Low Insertion Loss, Low PDL
- High Isolation
- Wide Operating Wavelength
- Wide Operating Temperature
- High Reliability and Stability

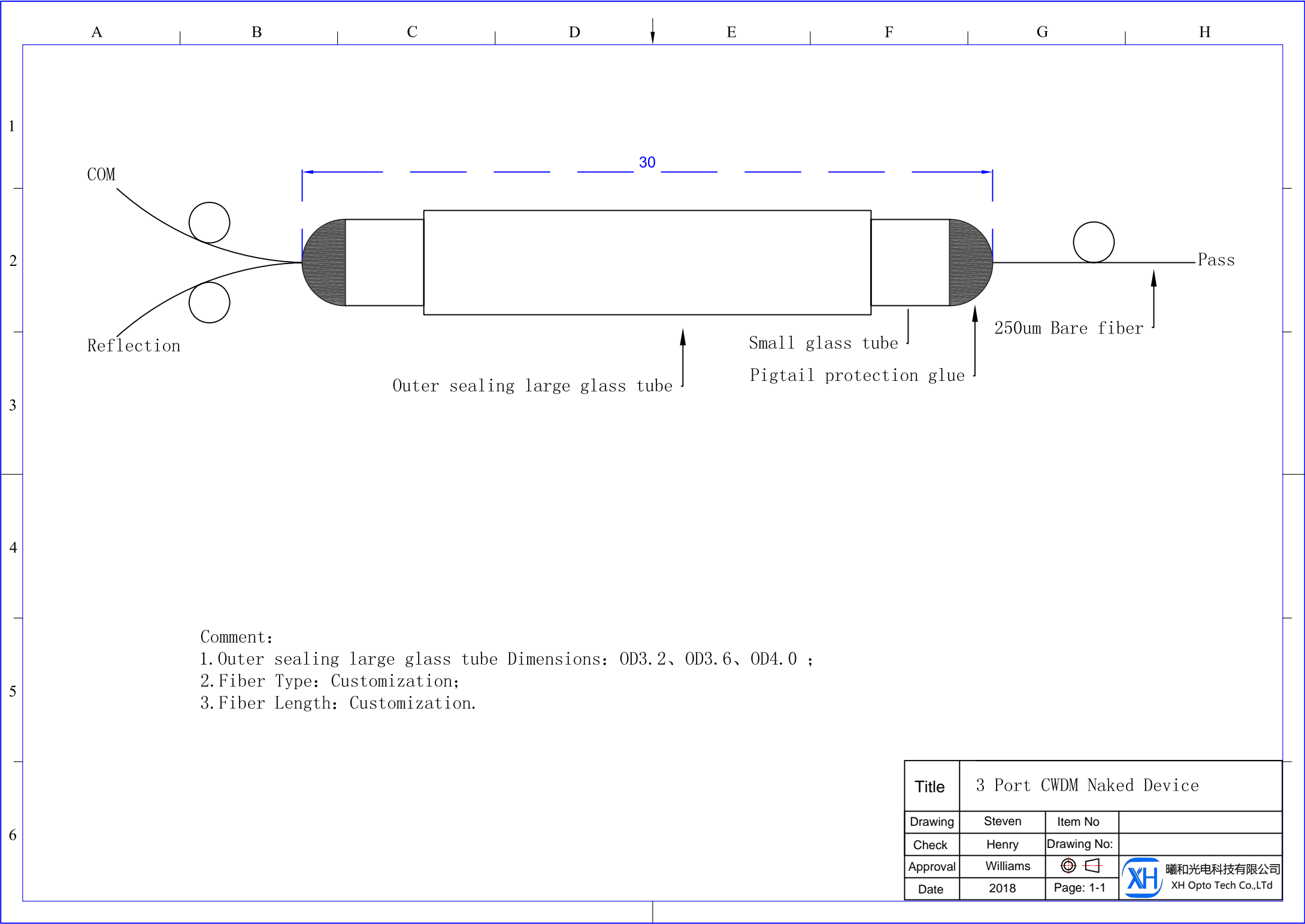


Application

- WDM System
- PON Networks
- CATV Links

Specification:

Items	3-port CWDM	3-port Mini CWDM
Operating wavelength	1260-1620nm&1460-1620nm	
Pass band	±6.5nm、±7.0nm、±7.5nm	
Transmission band Insertion Loss	≤0.6 dB	≤0.8 dB
Reflection band Insertion Loss	≤0.4 dB	≤0.6 dB
Isolation	≥30dB	
Return Loss	≥50 dB	
Directivity	≥50 dB	
Ripple	≤0.3 dB	
Package Dimension	Φ4.0xL30mm & Φ3.2xL30mm & Φ3.0xL30mm	Φ5.5xL34mm & Φ5.5xL38mm
Operation temperature	-40℃~+85℃	



Comment:
 1.Outer sealing large glass tube Dimensions: OD3.2、OD3.6、OD4.0 ;
 2.Fiber Type: Customization;
 3.Fiber Length: Customization.

Title	3 Port CWDM Naked Device		
Drawing	Steven	Item No	
Check	Henry	Drawing No:	
Approval	Williams		曦和光电科技有限公司 XH Opto Tech Co.,LTd
Date	2018	Page: 1-1	