



# ABS box type PLC Splitter

## Description

SM ABS PLC splitter is commonly used in PON network, and has a good protective effect for the internal optical components and cables. It has simple design and reliable installation.

## Feature

- Low insertion loss, low PDL
- Good channel to channel uniformity
- Wide operating wavelength from 1260-1650nm
- Compact design
- Input and output cable: OD 2.0/3.0mm, Good protecting for bare fiber, convenient for connector assembly



ABS box type PLC Splitter

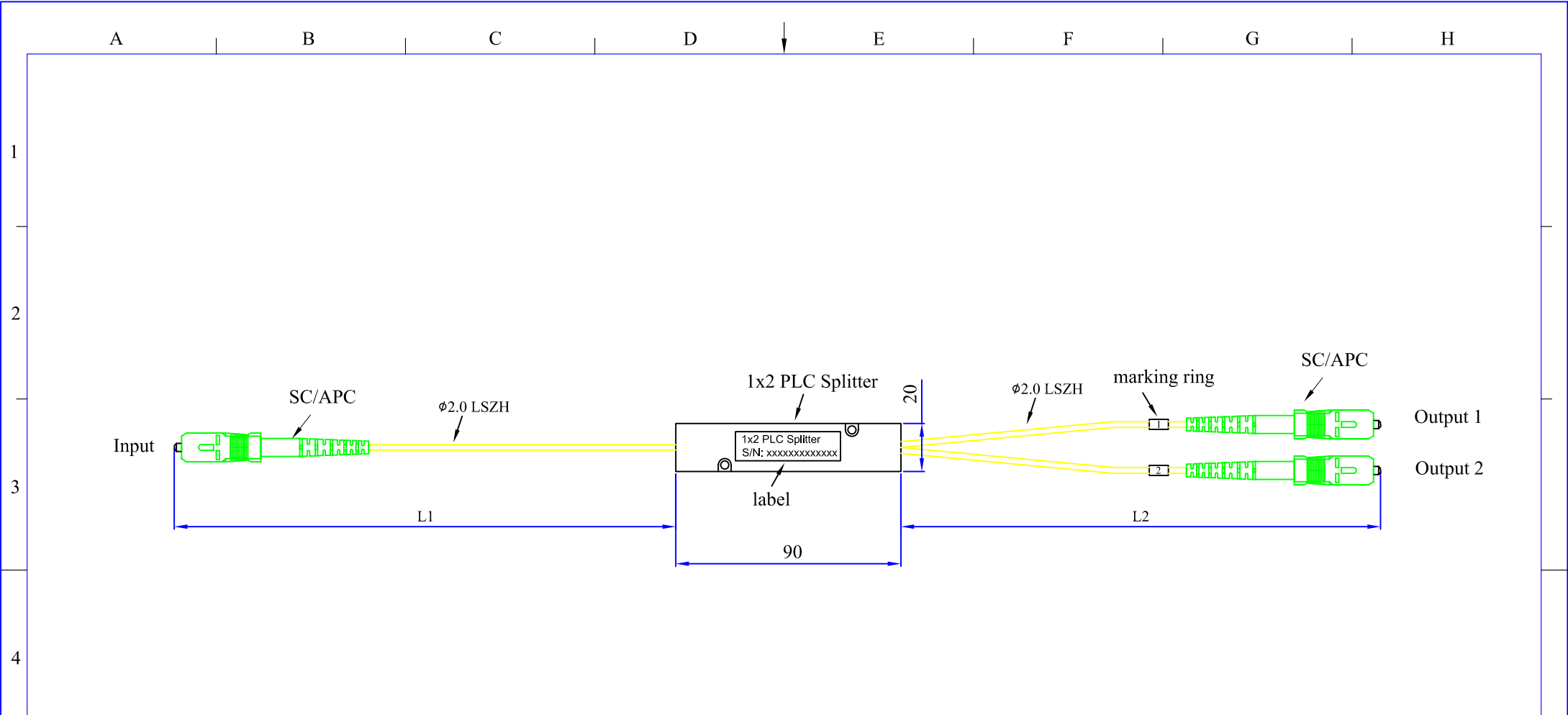
## Application

- CATV system
- Optical fiber sensor
- LAN network
- FTTH

## Specification: (without connector)

Parameters	1×2	2×2	1×4	2×4	1×8	2×8	1×16	2×16	1×32	2×32	1×64	2×64
Operating wavelength(nm)	1260~1650											
Fiber type	G652D/G657A1/G657A2											
Insertion Loss(dB)	4	4.2	7.2	7.4	10.5	10.8	13.7	14	17	17.5	20.6	21
Uniformity(dB)	0.4	1	0.6	1.5	0.8	1.5	1.2	2	1.5	2	2	2.5
Return Loss(dB)	55		55		55		55		55		55	
PDL(dB)	0.2	0.3	0.2	0.3	0.2	0.3	0.3	0.3	0.3	0.3	0.35	0.5
Directivity (dB)	55		55		55		55		55		55	
Temperature Stability (-40~85 °C)(dB)	0.5		0.5		0.5		0.5		0.5		0.5	
Operating temperature (°C)	-25~70											
Storage temperature (°C)	-25~70											
ABS box dimension (LxWxH) mm	100x80x10		100x80x10		100x80x10		100x80x10		100x80x10		120x80x18/ 140x115x18	

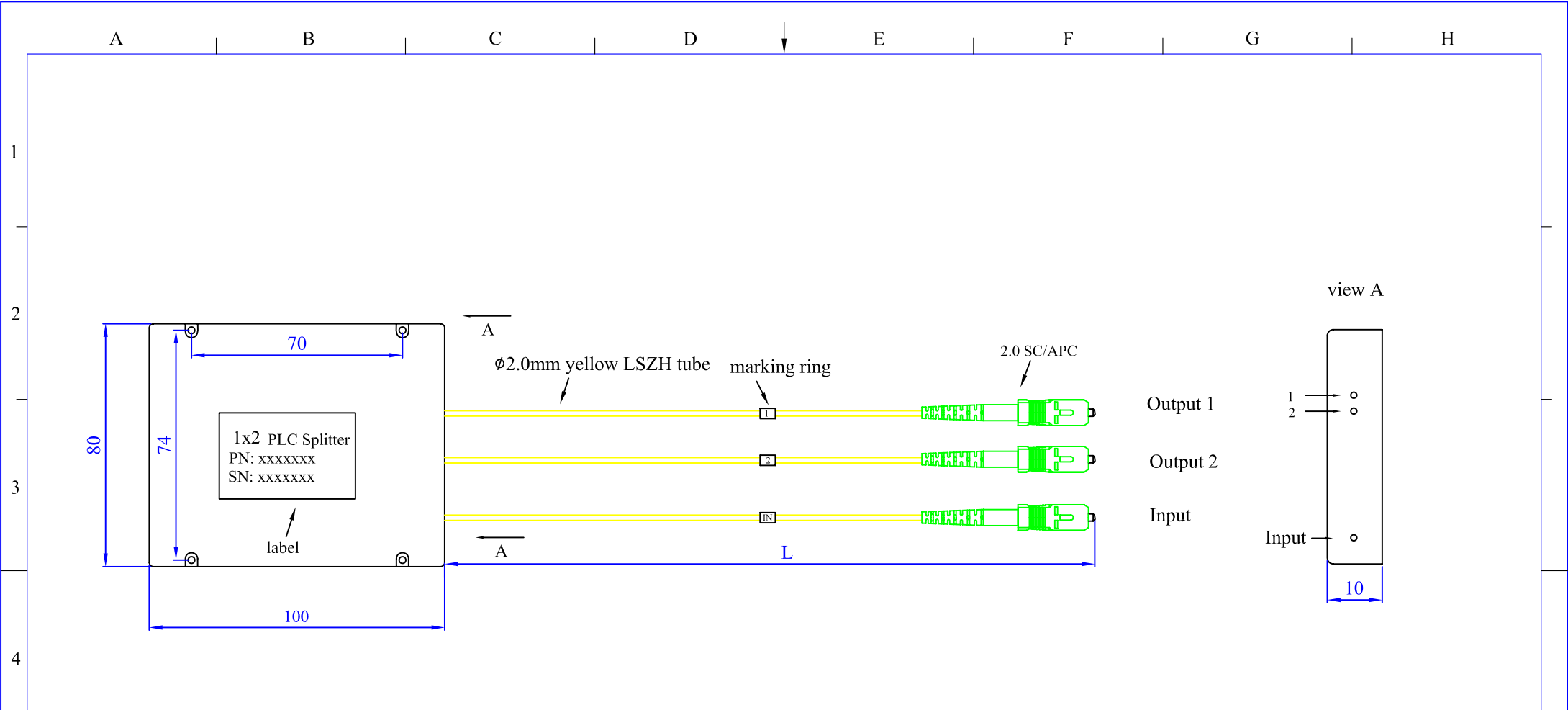
Note: Add an additional 0.3dB loss per connector.



**Technical requirement:**

Type 1xN		1x2
Operating wavelength range (nm)		1260~1650
Test wavelength (nm)		1310/1550
Insertion loss (dB)	Max	4.3(with connectors)
PDL (dB)	Max	0.2
Uniformity (dB)	Max	0.4
Return loss (dB)	Min	55
Directivity (dB)	Min	55
Operating temperature (°C)		-40~+85
Storage temperature (°C)		
Dimension (mm)	LxWxH	90x20x10
Fiber type		G652D/G657A1/G657A2
Connector type		SC/LC/FC

<b>Title</b>	PLC Splitter 1x2 ABS $\phi$ 2.0 LSZH input L1m output L2m size 90x20x10mm		
Drawing	Steven	Item No	
Check	Henry	Drawing No:	
Approval	Williams		職和光电科技有限公司 XH Opto Tech Co.,LTd
Date	2018	Page: 1-1	

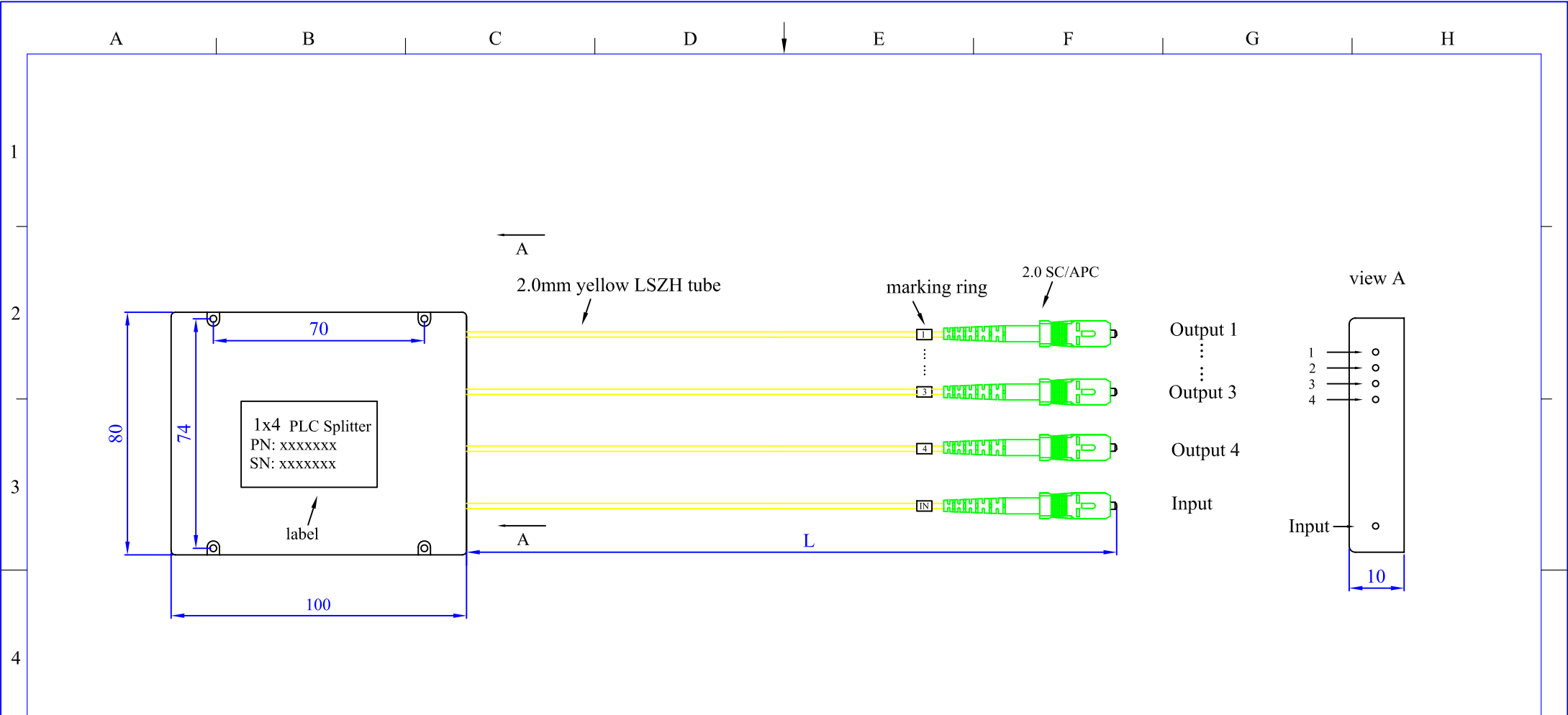


**Technical requirement:**

Type 1xN		1x2
Operating wavelength range (nm)		1260~1650
Test wavelength (nm)		1310/1550
Insertion loss (dB)	Max	4.3(with connectors)
PDL (dB)	Max	0.2
Uniformity (dB)	Max	0.4
Return loss (dB)	Min	55
Directivity (dB)	Min	55
Operating temperature (°C)		-40~+85
Storage temperature (°C)		
Dimension (mm)	LxWxH	100x80x10
Fiber type		G652D/G657A1/G657A2
Connector type		SC/LC/FC

PLC Splitter 1x2 ABS ø2.0 LSZH input and output  
Lm

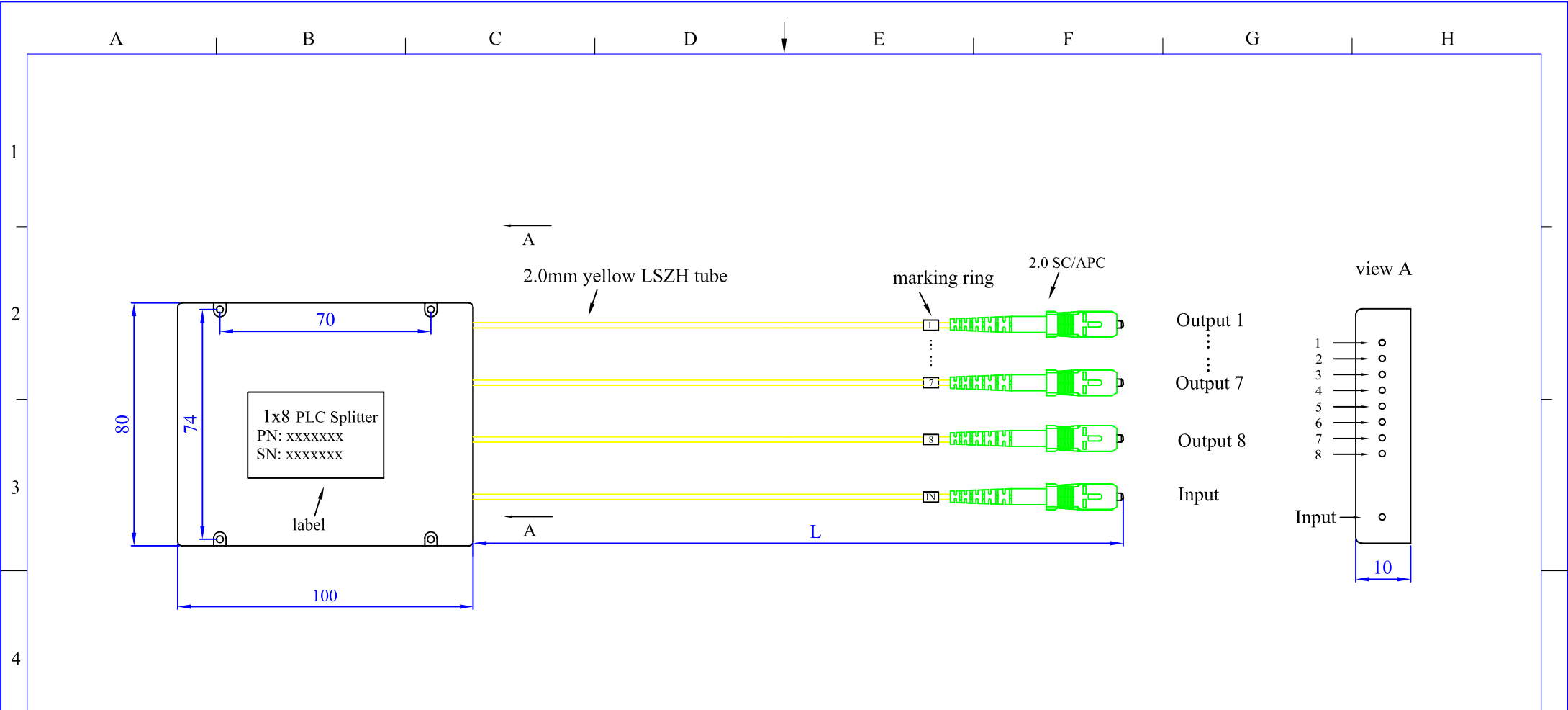
<b>Title</b>	PLC Splitter 1x2 ABS ø2.0 LSZH input output size 100x80x10mm		
Drawing	Steven	Item No	
Check	Henry	Drawing No:	
Approval	Williams		
Date	2018	Page: 1-1	職和光电科技有限公司 XH Opto Tech Co.,LTd



**Technical requirement:**

Type 1xN		1x4
Operating wavelength range (nm)		1260~1650
Test wavelength (nm)		1310/1550
Insertion loss (dB)	Max	7.5 (with connectors)
PDL (dB)	Max	0.2
Uniformity (dB)	Max	0.6
Return loss (dB)	Min	55
Directivity (dB)	Min	55
Operating temperature (°C)		-40~+85
Storage temperature (°C)		
Dimension (mm)	LxWxH	100x80x10
Fiber type		G652D/G657A1/G657A2
Connector type		SC/LC/FC

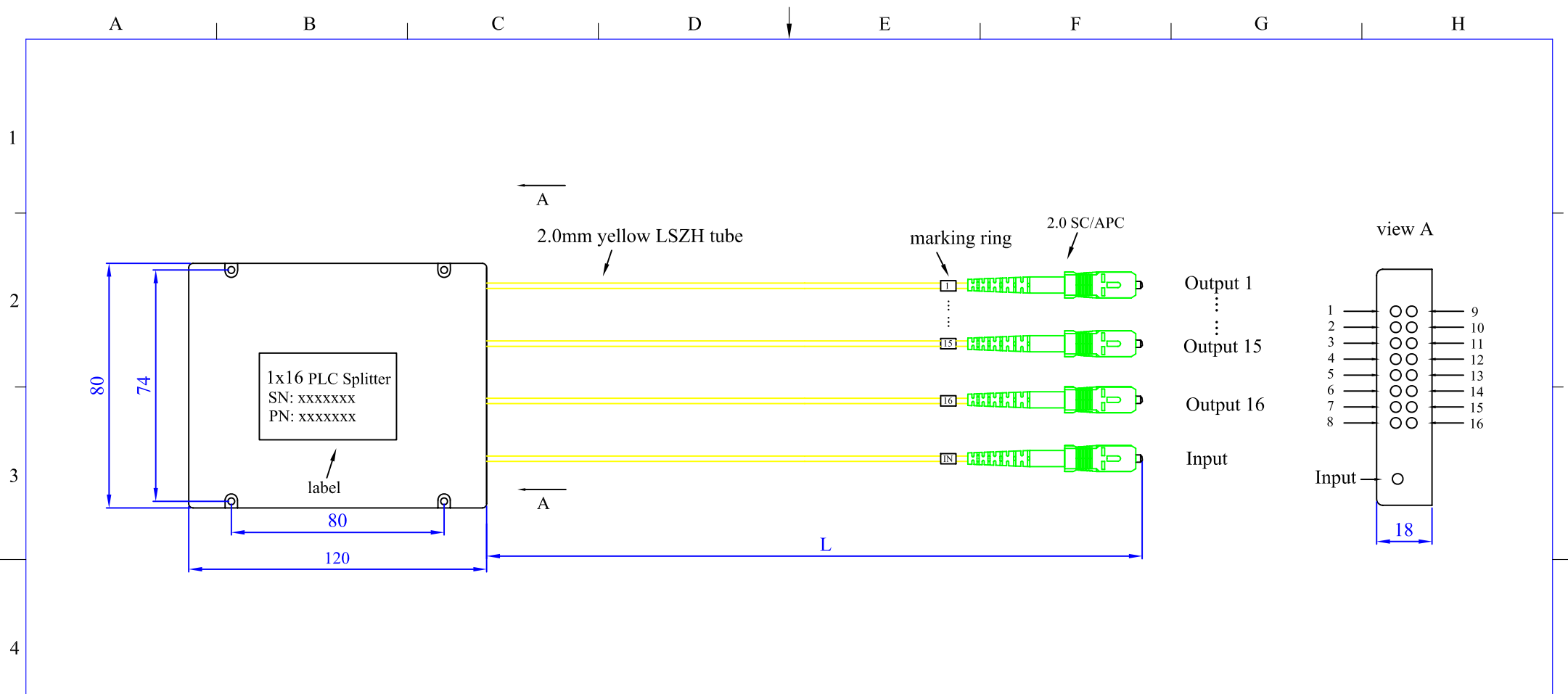
<b>Title</b>	PLC Splitter 1x4 ABS $\phi$ 2.0 LSZH input and output Lm size 100x80x10mm		
Drawing	Steven	Item No	
Check	Henry	Drawing No:	
Approval	Williams		職和光电科技有限公司 XH Opto Tech Co.,LTd
Date	2018	Page: 1-1	



**Technical requirement:**

Type 1xN		1x8
Operating wavelength range (nm)		1260~1650
Test wavelength (nm)		1310/1550
Insertion loss (dB)	Max	10.8 (with connectors)
PDL (dB)	Max	0.2
Uniformity (dB)	Max	0.8
Return loss (dB)	Min	55
Directivity (dB)	Min	55
Operating temperature (°C)		-40~+85
Storage temperature (°C)		
Dimension (mm)	LxWxH	100x80x10
Fiber type		G652D/G657A1/G657A2
Connector type		SC/LC/FC

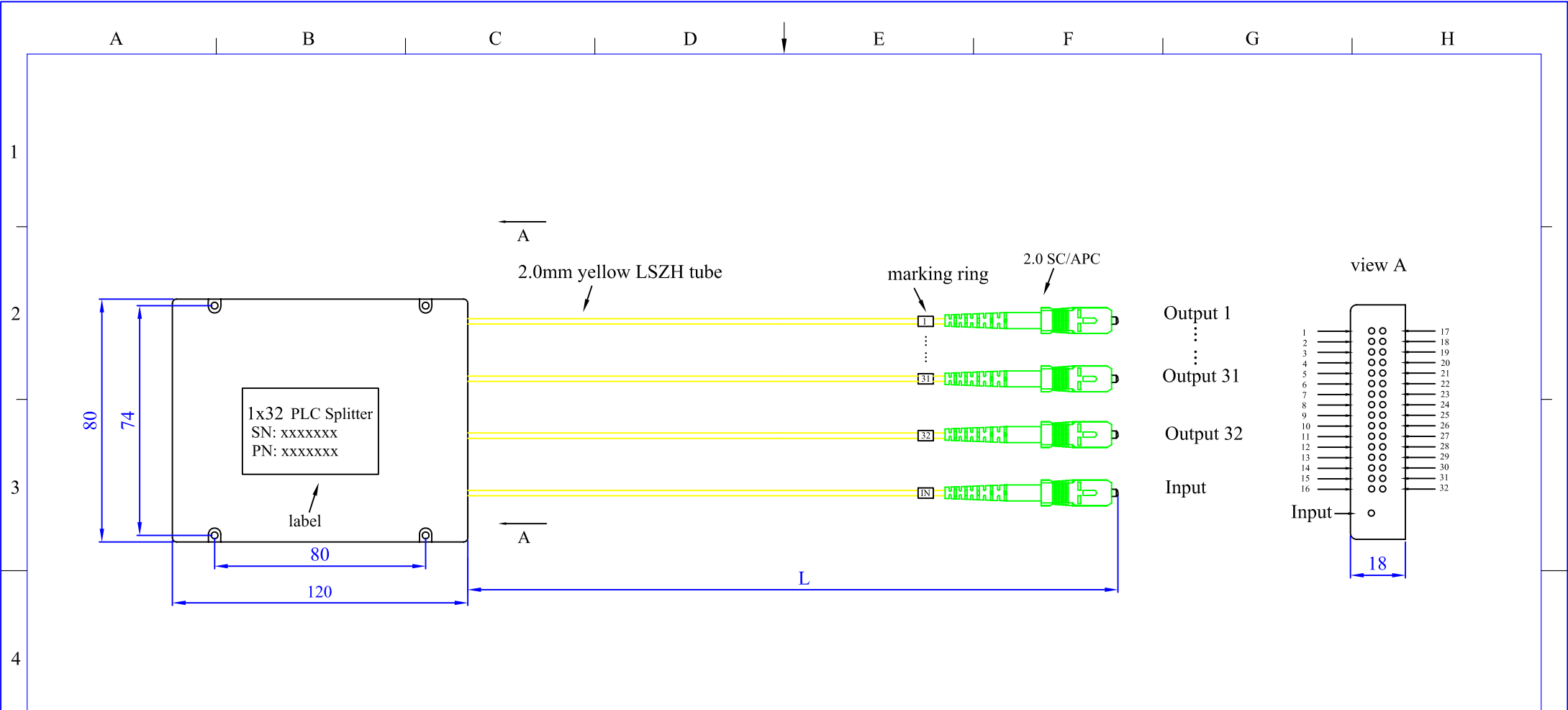
<b>Title</b>	PLC Splitter 1x8 ABS $\phi$ 2.0 LSZH input and output Lm size 100x80x10mm		
Drawing	Steven	Item No	
Check	Henry	Drawing No:	
Approval	Williams		聯和光电科技有限公司 XH Opto Tech Co.,LTD
Date	2018	Page: 1-1	



**Technical requirement:**

Type 1xN		1x16
Operating wavelength range (nm)		1260~1650
Test wavelength (nm)		1310/1550
Insertion loss (dB)	Max	14.0 (with connectors)
PDL (dB)	Max	0.3
Uniformity (dB)	Max	1.2
Return loss (dB)	Min	55
Directivity (dB)	Min	55
Operating temperature (°C)		-40~+85
Storage temperature (°C)		
Dimension (mm)	LxWxH	120x80x18
Fiber type		G652D/G657A1/G657A2
Connector type		SC/LC/FC

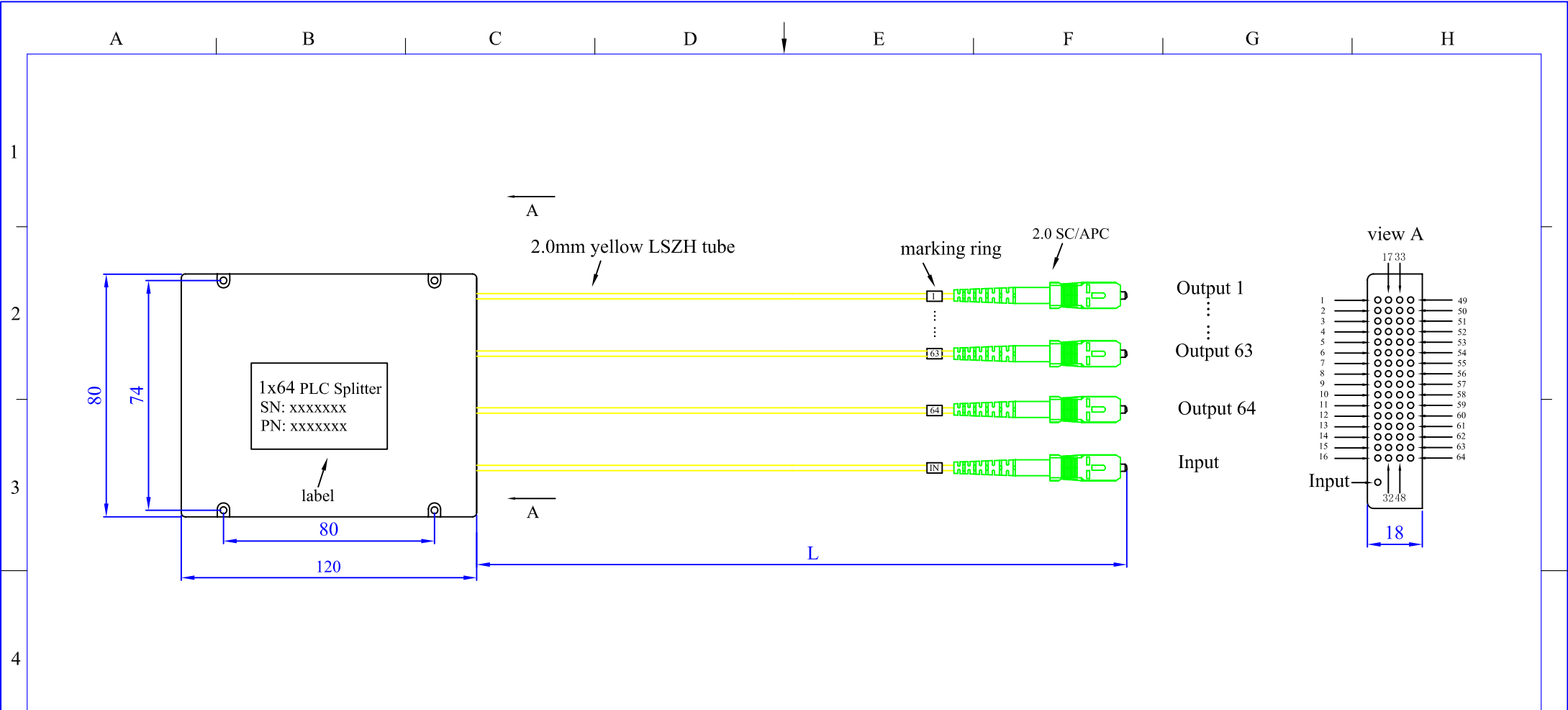
<b>Title</b>	PLC Splitter 1x16 ABS $\phi$ 2.0 LSZH input and output Lm size 120x80x18mm		
<b>Drawing</b>	Steven	Item No	
<b>Check</b>	Henry	Drawing No:	
<b>Approval</b>	Williams		職和光电科技有限公司 XH Opto Tech Co.,LTD
<b>Date</b>	2018	Page: 1-1	



**Technical requirement:**

Type 1xN		1x32
Operating wavelength range (nm)		1260~1650
Test wavelength (nm)		1310/1550
Insertion loss (dB)	Max	17.3 (with connectors)
PDL (dB)	Max	0.3
Uniformity (dB)	Max	1.5
Return loss (dB)	Min	55
Directivity (dB)	Min	55
Operating temperature (°C)		-40~+85
Storage temperature (°C)		
Dimension (mm)	LxWxH	120x80x18
Fiber type		G652D/G657A1/G657A2
Connector type		SC/LC/FC

<b>Title</b>	PLC Splitter 1x32 ABS $\phi$ 2.0 LSZH input and output Lm size 120x80x18mm		
Drawing	Steven	Item No	
Check	Henry	Drawing No:	
Approval	Williams		職和光电科技有限公司
Date	2018	Page: 1-1	XH Opto Tech Co.,LTD

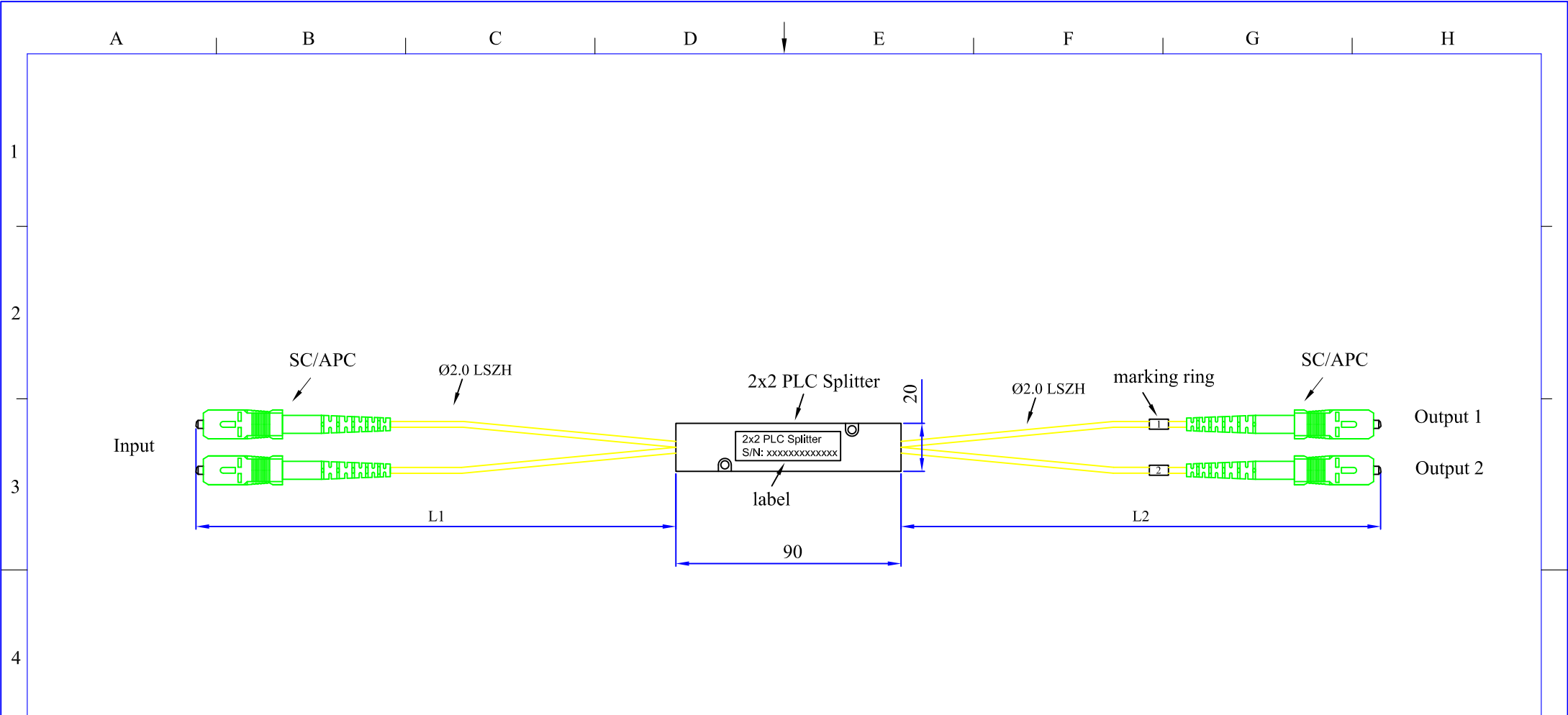


**Technical requirement:**

Type 1xN		1x64
Operating wavelength range (nm)		1260~1650
Test wavelength (nm)		1310/1550
Insertion loss (dB)	Max	20.9 (with connectors)
PDL (dB)	Max	0.35
Uniformity (dB)	Max	2.0
Return loss (dB)	Min	55
Directivity (dB)	Min	55
Operating temperature (°C)		-40~+85
Storage temperature (°C)		
Dimension (mm)	LxWxH	120x80x18
Fiber type		G652D/G657A1/G657A2
Connector type		SC/LC/FC

<b>Title</b>	PLC Splitter 1x64 ABS $\phi$ 2.0 LSZH input and output Lm size 120x80x18mm		
Drawing	Steven	Item No	
Check	Henry	Drawing No:	
Approval	Williams		職和光电科技有限公司 XH Opto Tech Co.,Ltd
Date	2018	Page: 1-1	

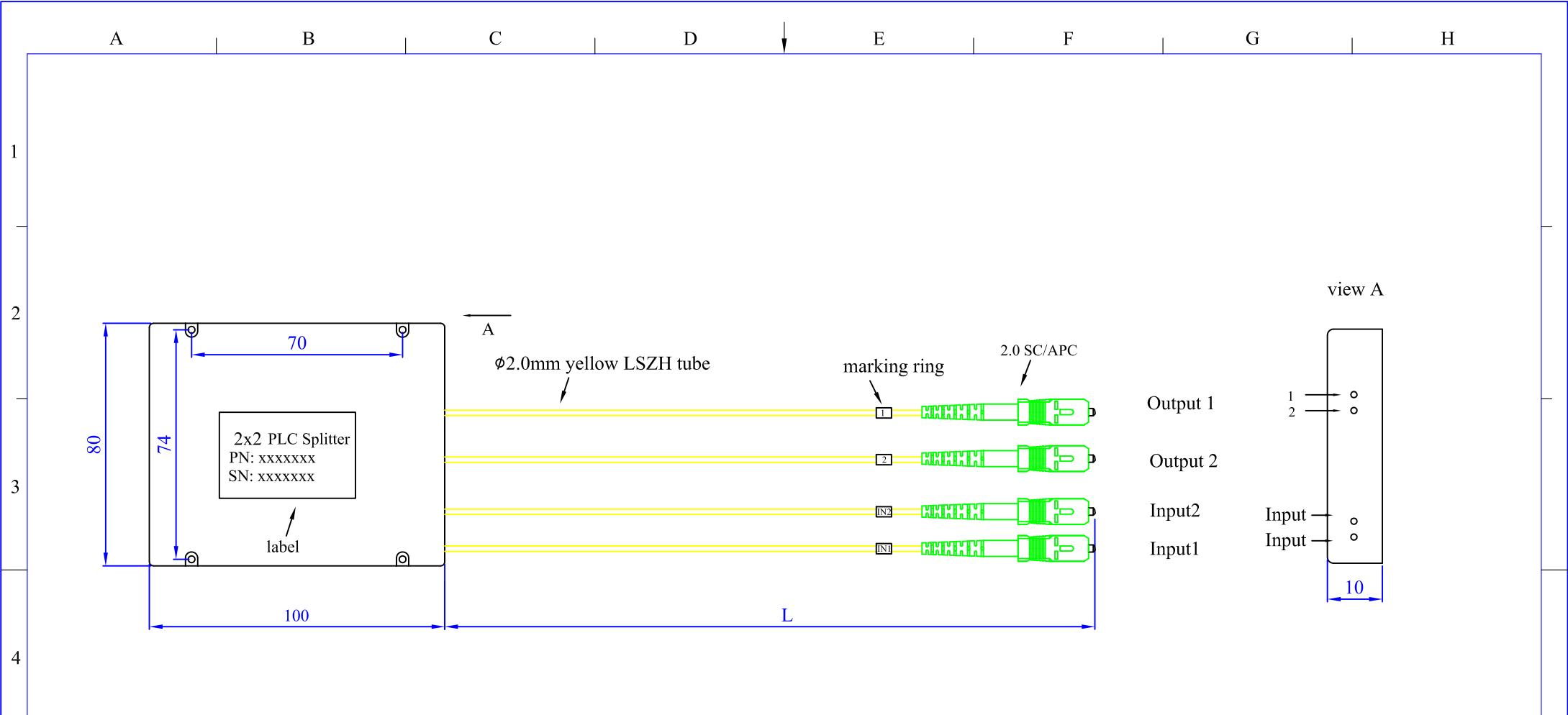




**Technical requirement:**


Type 2xN		2x2
Operating wavelength range (nm)		1260~1650
Test wavelength (nm)		1310/1550
Insertion loss (dB)	Max	4.5(with connectors)
PDL (dB)	Max	0.3
Uniformity (dB)	Max	1.0
Return loss (dB)	Min	55
Directivity (dB)	Min	55
Operating temperature (°C)		-40~+85
Storage temperature (°C)		
Dimension (mm)	LxWxH	90x20x10
Fiber type		G652D/G657A1/G657A2
Connector type		SC/LC/FC

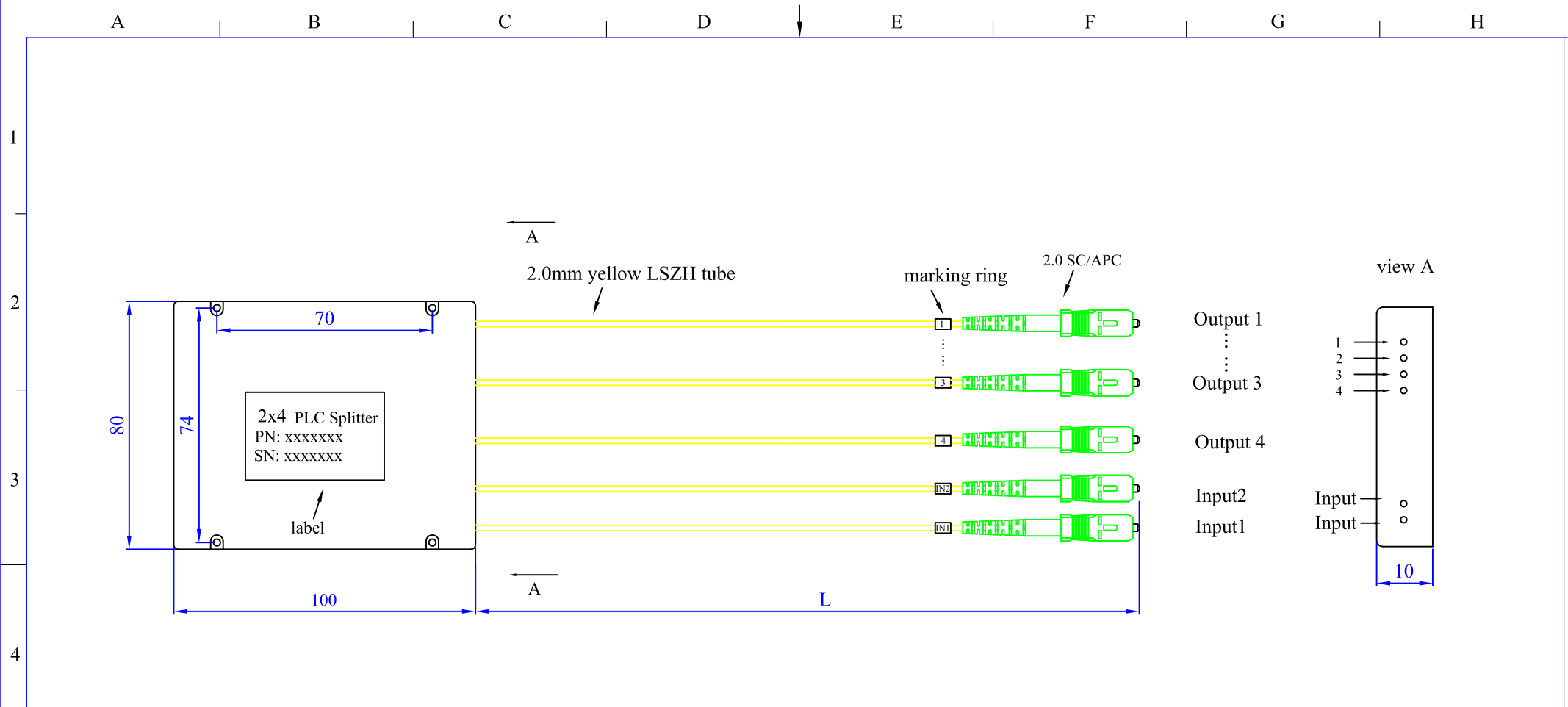
<b>Title</b>	PLC Splitter 2x2 ABS $\phi$ 2.0 LSZH input L1m output L2m size 90x20x10mm		
Drawing	Steven	Item No	
Check	Henry	Drawing No:	
Approval	Williams		
Date	2018	Page: 1-1	職和光电科技有限公司 XH Opto Tech Co.,Ltd



**Technical requirement:**

Type 2xN		2x2
Operating wavelength range (nm)		1260~1650
Test wavelength (nm)		1310/1550
Insertion loss (dB)	Max	4.5(with connectors)
PDL (dB)	Max	0.3
Uniformity (dB)	Max	1.0
Return loss (dB)	Min	55
Directivity (dB)	Min	55
Operating temperature (°C)		-40~+85
Storage temperature (°C)		
Dimension (mm)	LxWxH	100x80x10
Fiber type		G652D/G657A1/G657A2
Connector type		SC/LC/FC

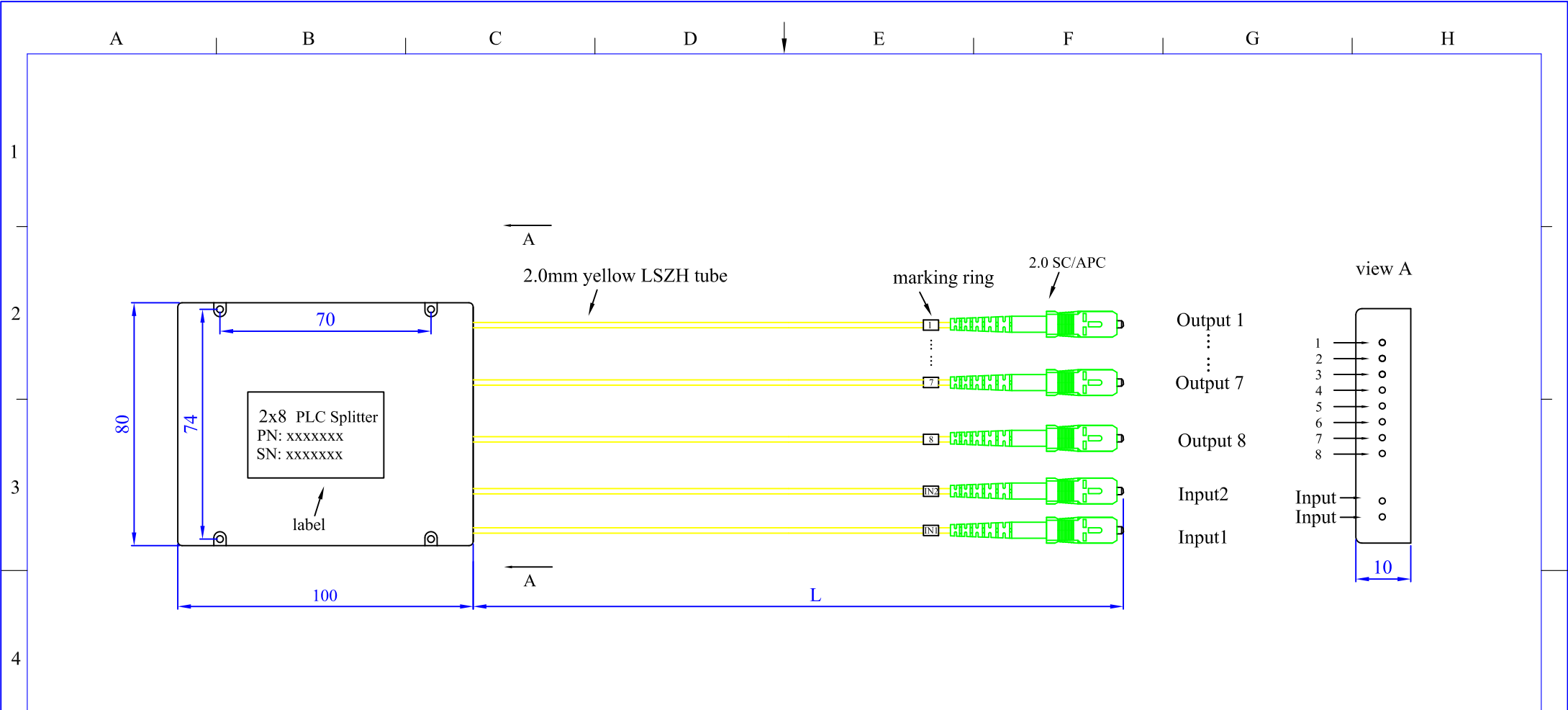
<b>Title</b> PLC Splitter 2x2 ABS ø2.0 LSZH input and output Lm size 100x80x10mm			
Drawing	Steven	Item No	
Check	Henry	Drawing No:	
Approval	Williams	⊙ □	 曦和光电科技有限公司 XH Opto Tech Co.,Ltd
Date	2018	Page: 1-1	



**Technical requirement:**

Type 2xN		2x4
Operating wavelength range (nm)		1260~1650
Test wavelength (nm)		1310/1550
Insertion loss (dB)	Max	7.7 (with connectors)
PDL (dB)	Max	0.3
Uniformity (dB)	Max	1.5
Return loss (dB)	Min	55
Directivity (dB)	Min	55
Operating temperature (°C)		-40~+85
Storage temperature (°C)		
Dimension (mm)	LxWxH	100x80x10
Fiber type		G652D/G657A1/G657A2
Connector type		SC/LC/FC

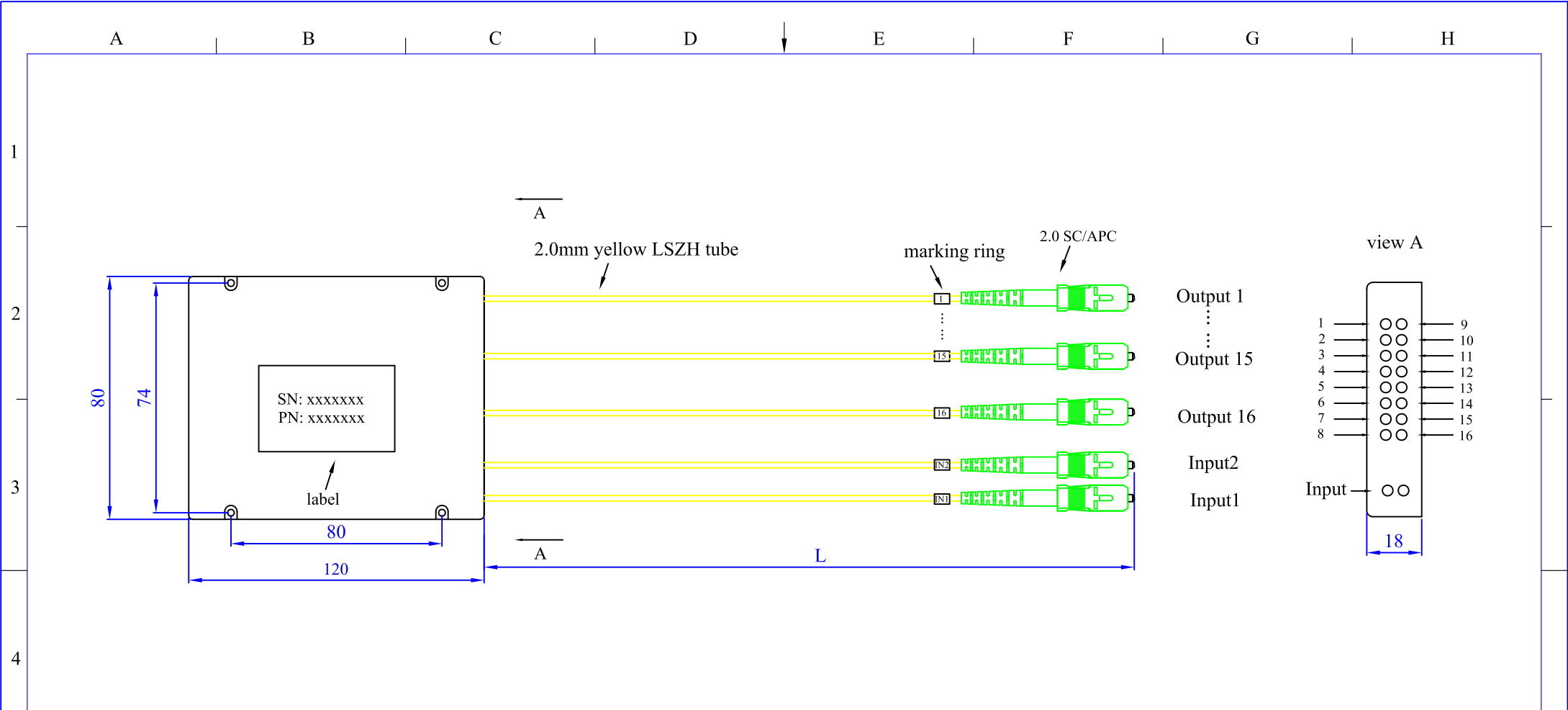
<b>Title</b>	PLC Splitter 2x4 ABS $\phi$ 2.0 LSZH input and output Lm size 100x80x10mm		
<b>Drawing</b>	Steven	Item No	
<b>Check</b>	Henry	Drawing No:	
<b>Approval</b>	Williams		
<b>Date</b>	2018	Page: 1-1	曦和光电科技有限公司 XH Opto Tech Co.,Ltd



**Technical requirement:**

Type 2xN		2x8
Operating wavelength range (nm)		1260~1650
Test wavelength (nm)		1310/1550
Insertion loss (dB)	Max	11.1 (with connectors)
PDL (dB)	Max	0.3
Uniformity (dB)	Max	1.5
Return loss (dB)	Min	55
Directivity (dB)	Min	55
Operating temperature (°C)		-40~+85
Storage temperature (°C)		
Dimension (mm)	LxWxH	100x80x10
Fiber type		G652D/G657A1/G657A2
Connector type		SC/LC/FC

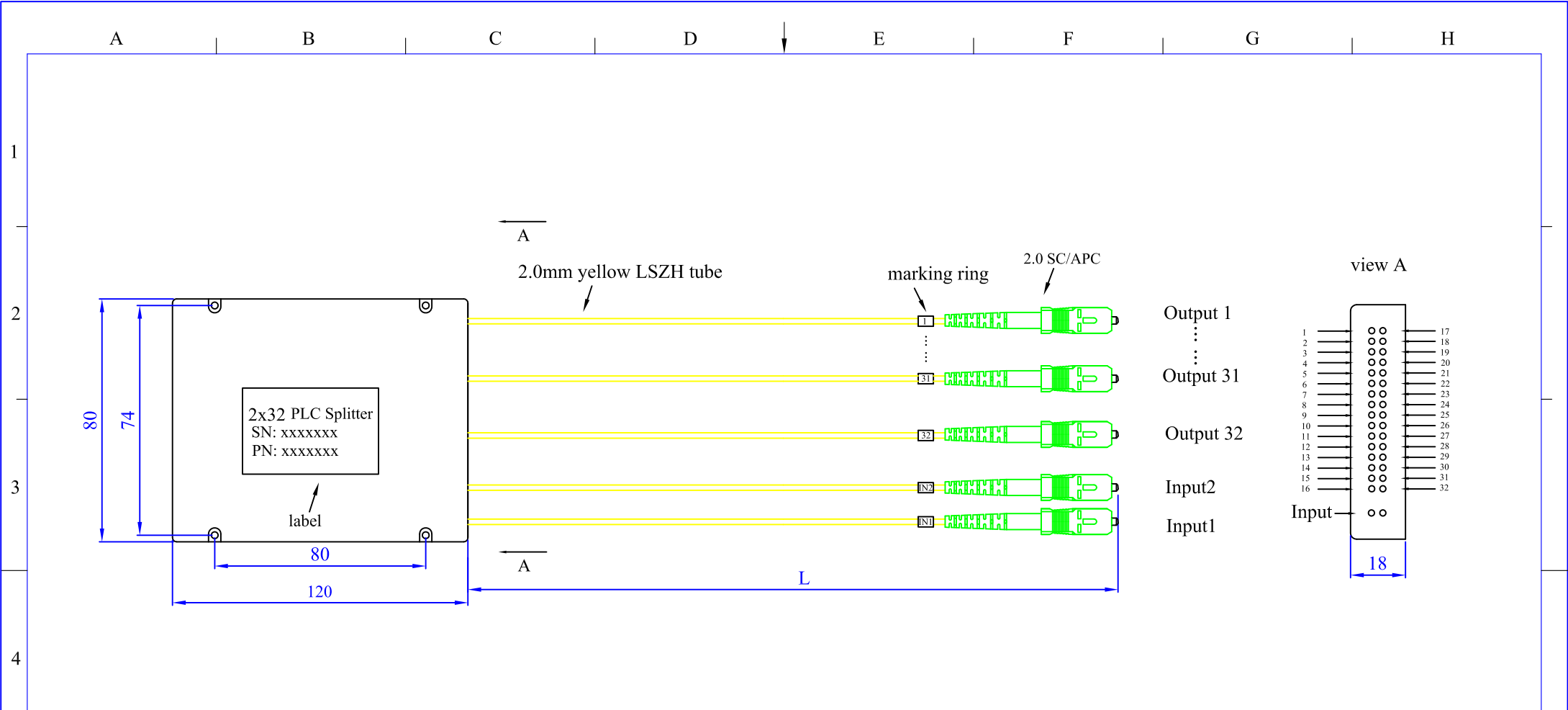
<b>Title</b>	PLC Splitter 2x8 ABS $\phi$ 2.0 LSZH input and output Lm size 100x80x10mm		
<b>Drawing</b>	Steven	Item No	
<b>Check</b>	Henry	Drawing No:	
<b>Approval</b>	Williams		
<b>Date</b>	2018	Page: 1-1	XH 曦和光电科技有限公司 XH Opto Tech Co.,Ltd



**Technical requirement:**

Type 2xN		2x16
Operating wavelength range (nm)		1260~1650
Test wavelength (nm)		1310/1550
Insertion loss (dB)	Max	14.3 (with connectors)
PDL (dB)	Max	0.3
Uniformity (dB)	Max	2.0
Return loss (dB)	Min	55
Directivity (dB)	Min	55
Operating temperature (°C)		-40~+85
Storage temperature (°C)		
Dimension (mm)	LxWxH	120x80x18
Fiber type		G652D/G657A1/G657A2
Connector type		SC/LC/FC

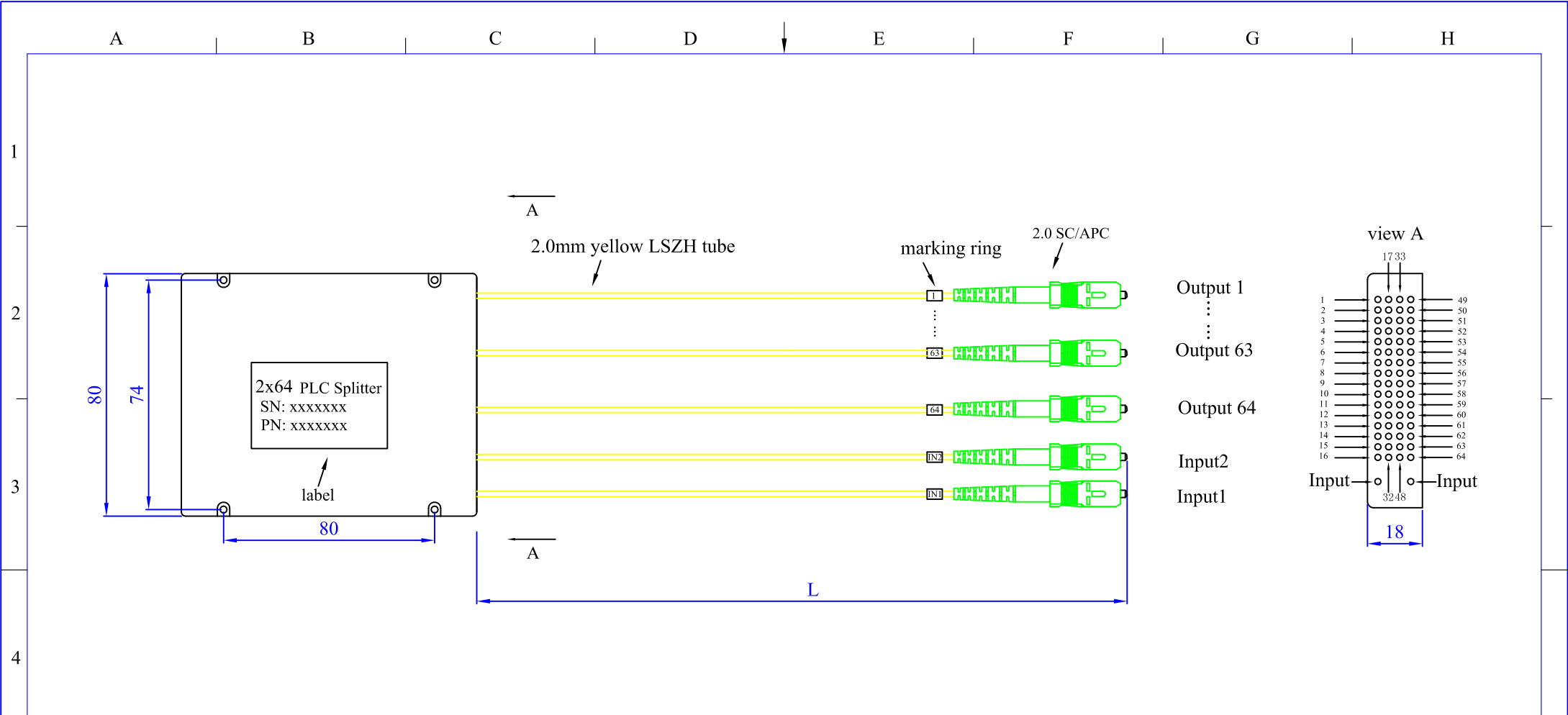
<b>Title</b>	PLC Splitter 2x16 ABS $\phi$ 2.0 LSZH input and output Lm size 120x80x18mm		
Drawing	Steven	Item No	
Check	Henry	Drawing No:	
Approval	Williams		
Date	2018	Page: 1-1	曦和光电科技有限公司 XH Opto Tech Co.,Ltd



**Technical requirement:**

Type 2xN		2x32
Operating wavelength range (nm)		1260~1650
Test wavelength (nm)		1310/1550
Insertion loss (dB)	Max	17.8 (with connectors)
PDL (dB)	Max	0.3
Uniformity (dB)	Max	2.5
Return loss (dB)	Min	55
Directivity (dB)	Min	55
Operating temperature (°C)		-40~+85
Storage temperature (°C)		
Dimension (mm)	LxWxH	120x80x18
Fiber type		G652D/G657A1/G657A2
Connector type		SC/LC/FC

Title		PLC Splitter 2x32 ABS $\phi$ 2.0 LSZH input and output Lm size 120x80x18mm	
Drawing	Steven	Item No	
Check	Henry	Drawing No:	
Approval	Williams		曦和光电科技有限公司 XH Opto Tech Co.,Ltd
Date	2018	Page: 1-1	



**Technical requirement:**

Type 2xN		2x64
Operating wavelength range (nm)		1260~1650
Test wavelength (nm)		1310/1550
Insertion loss (dB)	Max	21.3 (with connectors)
PDL (dB)	Max	0.5
Uniformity (dB)	Max	2.5
Return loss (dB)	Min	55
Directivity (dB)	Min	55
Operating temperature (°C)		-40~+85
Storage temperature (°C)		
Dimension (mm)	LxWxH	120x80x18
Fiber type		G652D/G657A1/G657A2
Connector type		SC/LC/FC

<b>Title</b>	PLC Splitter 2x64 ABS φ2.0 LSZH input and output Lm size 120x80x18mm		
Drawing	Steven	Item No	
Check	Henry	Drawing No:	
Approval	Williams		
Date	2018	Page: 1-1	曦和光电科技有限公司 XH Opto Tech Co.,Ltd