



# CWDM OADM module

## Description

The 8ch CWDM Module packaged in a compact Aluminum box performs 8ch CWDM signals ADD/DROP function. This BOX has smaller size than ordinary one and takes up less installation space in system.

## Feature

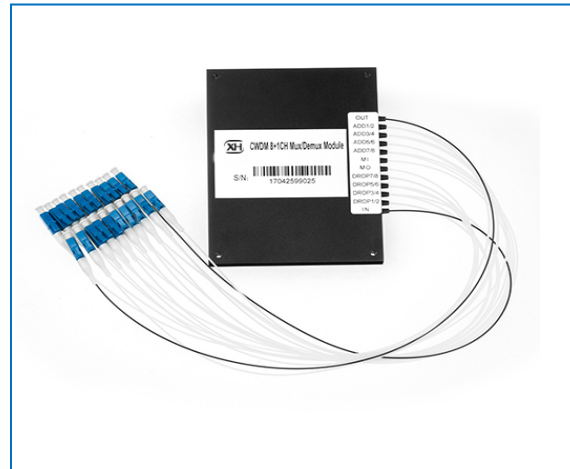
- Low Insertion Loss, Low PDL
- High Isolation
- Wide Operating Wavelength
- Wide Operating Temperature
- High Reliability and Stability

## Application

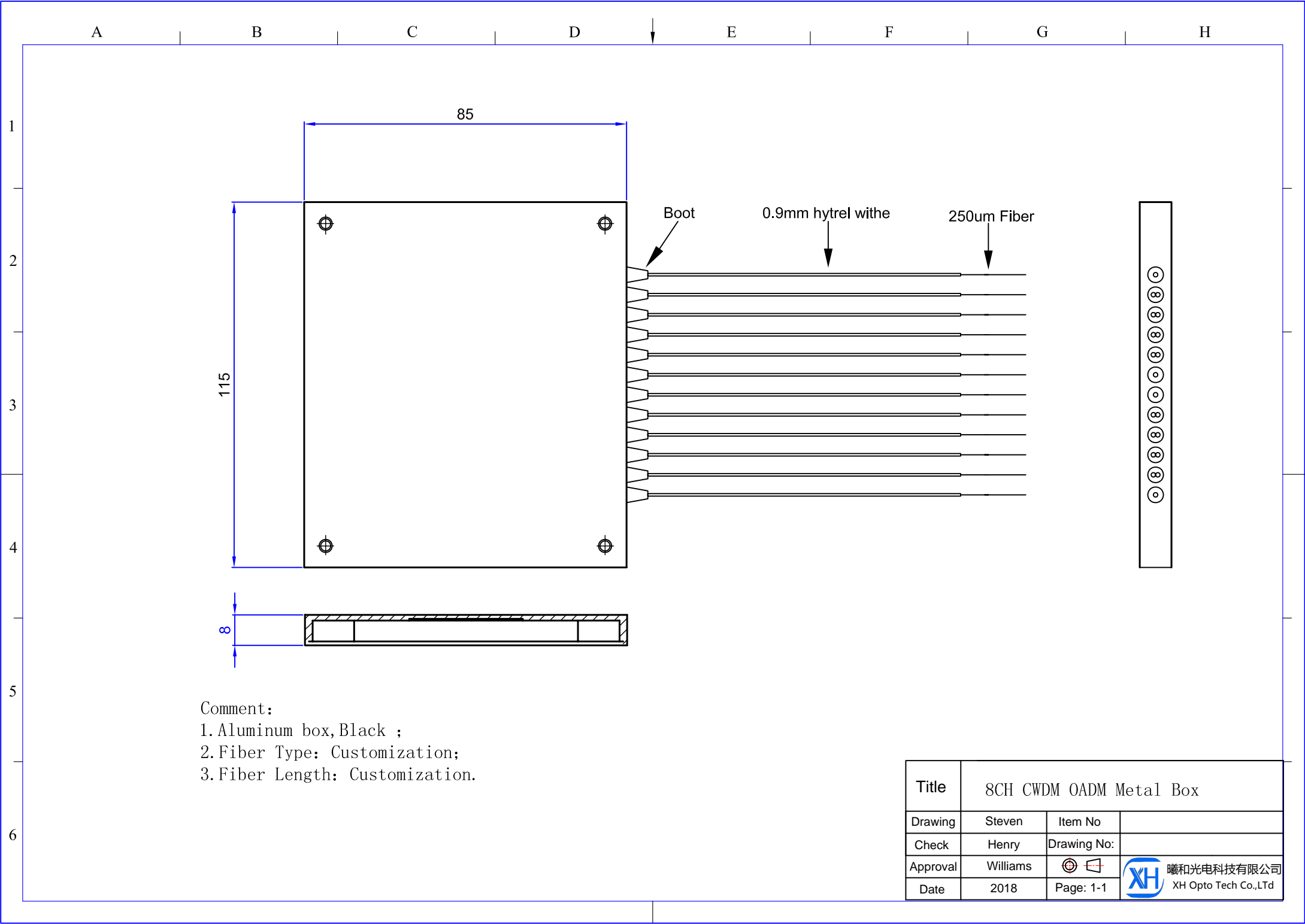
- WDM System
- PON Networks
- CATV Links

## Specification:

Items	4CH	8CH
Operating wavelength	1260-1620nm、1460-1620nm	
Pass band	±6.5nm、±7.0nm	
Insertion Loss	≤1.7 dB	≤3.0 dB
Adjacent Channel Isolation	≥30dB	
Non Adjacent Channel Isolation	≥45dB	
Return Loss	≥50 dB	
Directivity	≥50 dB	
Ripple	≤0.5 dB	
Package Dimension	L100xW80xH10mm	L115xW85xH8mm
Operation temperature	-40°C ~ +85°C	



8ch CWDM OADM module



Comment:  
 1. Aluminum box, Black ;  
 2. Fiber Type: Customization;  
 3. Fiber Length: Customization.

Title	8CH CWDM OADM Metal Box		
Drawing	Steven	Item No	
Check	Henry	Drawing No:	
Approval	Williams		曦和光电科技有限公司 XH Opto Tech Co.,LTd
Date	2018	Page: 1-1	