



E2000 Simplex Adapter

E2000/PC E2000/APC Simplex Adapter

Description

E2000 Simplex adapter is a fiber optical passive device designed for connection between two connectors.

Feature

- Panel clip for easy installation
- Available in several standard colors
- Available without flange or with flange for duplex, saving panel space
- All parts compliant with ROHS

Application

- Telecom network
- Ethernet network
- Optical communication equipment
- Local Area Networks(LANs)
- Data processing networks



Specification:

Items	Insertion Loss	Mechanical resistance	Repeatability	Operating Temperature
SM/PC	≤0.2dB	200-600g	<0.2dB(500times)	-40℃~+85℃
SM/APC	≤0.2dB	200-600g	<0.2dB(500times)	-40℃~+85℃
MM/PC	≤0.2dB	200-600g	<0.2dB(500times)	-40℃~+85℃

A B C D E F G H

1

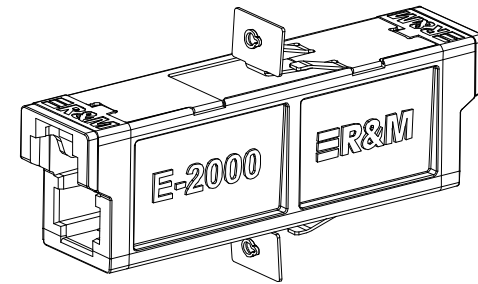
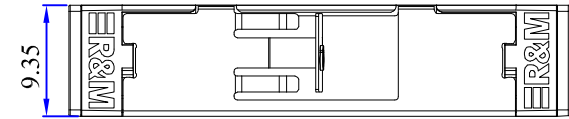
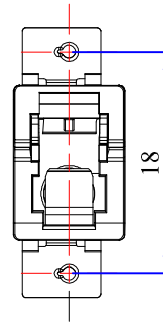
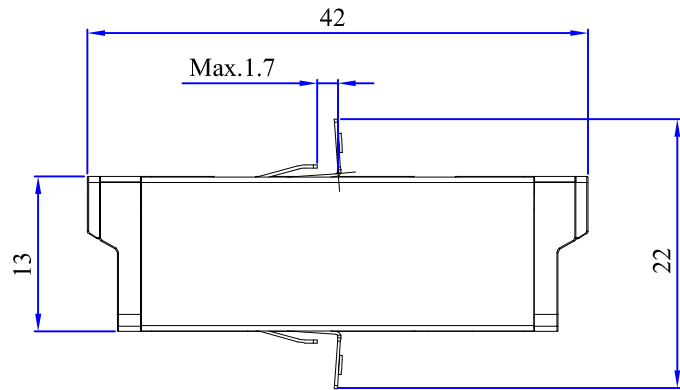
2

3

4


5

6



Technical requirements:

1.The dimensions on the drawing are just for reference, which important is to match well with each other.

Title	E2000 Adapter		
Drawing	Steven	Item No	
Check	Henry	Drawing No:	
Approval	Williams	⊙	 曦和光电科技有限公司 XH Opto Tech Co.,LTd
Date	2018	Page: 1-1	