



# DWDM LGX module

Compact LGX WDM Module performs 8ch DWDM signals MUX&DEMUX or 16ch DWDM signals MUX/DEMUX

## Description

Compact LGX WDM Module performs 8ch DWDM signals MUX&DEMUX or 16ch DWDM signals MUX/DEMUX. This LGX has smaller size than ordinary one and takes up less space in system.

## Feature

- Low Insertion Loss, Low PDL
- High Isolation
- Wide Operating Wavelength
- Wide Operating Temperature
- High Reliability and Stability

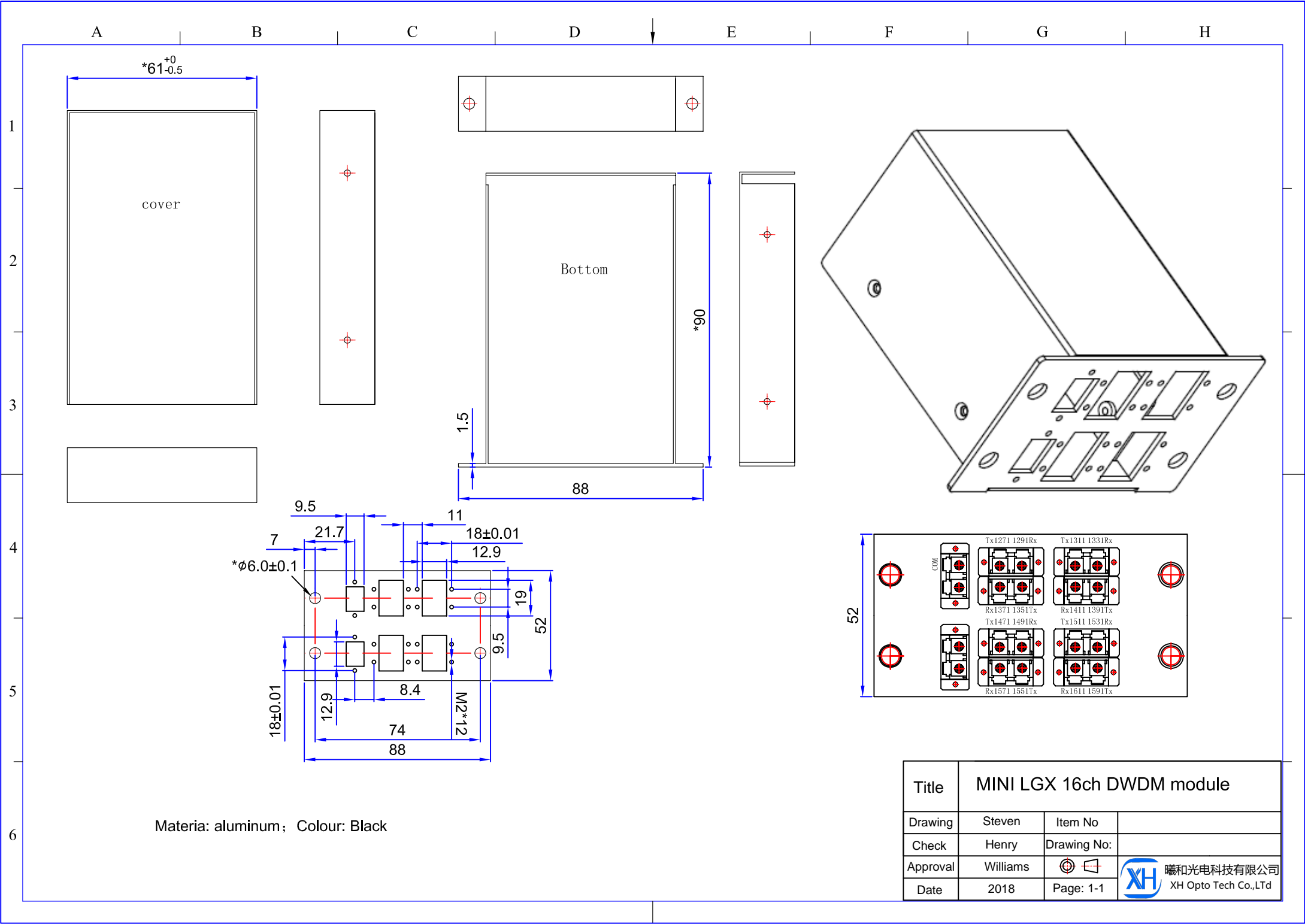
## Application

- WDM System
- PON Networks
- CATV Links

## Specification:

Items	8ch DWDM	16ch DWDM
Operating wavelength	1260-1620nm	
Pass band	±6.5nm、±7.0nm、±7.5nm	
Insertion Loss	≤2.5 dB	≤4.0 dB
Adjacent Channel Isolation	≥28dB	
Non Adjacent Channel Isolation	≥45dB	
Return Loss	≥50 dB	
Directivity	≥45 dB	
Ripple	≤0.5 dB	
Package Dimension	L90Xw61xH26mm	L90Xw61xH52mm
Operation temperature	-40℃~+85℃	





Materia: aluminum; Colour: Black

Title	MINI LGX 16ch DWDM module		
Drawing	Steven	Item No	
Check	Henry	Drawing No:	
Approval	Williams		
Date	2018	Page: 1-1	職和光电科技有限公司 XH Opto Tech Co.,Ltd